

# Madison Bead Society Newsletter

Vol. 20, No. 1 P.O. Box 1563, Madison, WI 53701-1563

Newsletter Date  
Volume 20 Issue 1  
**August 2010**

## July Meeting Be de FUN

About 10 folks had a nice time in Stoughton at the BE DE FU. Half worked at Midnight Moon, the other half down the street at Diakonos Designs. We had a guest from rural New York who was visiting family and very thrilled to be invited to join in. Beautiful jewelry emerged in the relatively short period, and there wasn't enough time to chat and enjoy the snacks due to the competitive pressure. Patty Wanninger, who is a new member (and your new newsletter editor, me) won the prize!

## UW Hospital Bead Society Display

This September, MBS will again have a display at the UW hospital—this is the 7<sup>th</sup> time we have displayed there. It is a chance for the society to reach out to potential members and gives members an opportunity to sell. Display items are sold through the Hospital's gift shop; 20% of sales is donated to the Hospital's art fund.

You may drop off your submission (no more than 3 pieces) at the Bead Bin during the week of August 23-27. Each item needs to be accompanied by a card (available at the Bead Bin), giving the artist's name, title or name of the piece, technique used, and the price (tax not included). If you do not want to sell a piece, write NFS next to the price (a price is required for all items for insurance purpose). Each item plus card needs to be in its own small plastic bag, and the 3 small plastic bags need to be in a larger plastic bag. This permits the exhibitor to pick and choose items for the display. The exhibitor will have a nice variety to work with if we collect 60 – 80 pieces. We will send an email if we have fewer than that and need more.

The display will go up around Labor Day and will be taken down at the end of September. Wally Brinkmann (who is coordinating this) will return all unsold items, as well as checks or cash for items sold, at the October MBS meeting. Let her know if you need your items before that date. Any items not picked up at the October MBS meeting will be available at the Bead Bin a couple of days after the meeting. Wally will send a check amounting to 20% of all items sold to the Hospital's art fund. Artists who had items sold need to reimburse her. Email Wally if you have any questions (wabrinkm@wisc.edu).

## It's Renewal Time Again – from Pat Reichert, Membership Chair

Once again, membership rates have not changed but this year, you get more bang for your buck. With the meeting schedule change, meeting over the summer and not in Dec. and Jan., you're getting 10 meetings for the price of 9. If you joined after March 1, 2010, your membership is good until Aug. 31, 2011. I will contact those members so there is no confusion. If you are an officer or a chair, your membership is free and I will be mailing your membership cards soon (sorry I forgot to bring them to the July meeting). Your membership must be up to date to participate in the University Hospital display and to get the membership rate at the November 20th MBS Fine Art Sale at Westgate.

Please fill out the form in this newsletter (also on the Web site) and mail it in with your check. I will be at the Aug. and Sept. meeting too if you want to save the price of a stamp but I will be on vacation from Oct. 9-31st. The newsletter is posted to the Web site and an email is sent to the membership when it is posted so it's very important that your email is up to date and legible.

Thanks everyone. I look forward to summer beading stories at the next two meetings.



## MBS Membership Renewal Form 2010-11

Please complete this form and return it to MBS with your payment. Membership cards will be mailed to you. Thank you!

Name \_\_\_\_\_

Address \_\_\_\_\_

City, State, Zip \_\_\_\_\_

Phone \_\_\_\_\_

\*Email \_\_\_\_\_

(\*The newsletter is distributed via email. If you prefer a copy be mailed to you, check here \_\_\_\_ )

May we include your name on a membership list distributed to MBS members? Yes / No

**\*\*\*\*\* ATTENTION: Meeting Schedule Revised \*\*\*\*\***

The members voted at the 2010 Annual Meeting (May 2010) to revise the meeting schedule. We will now meet in June, July, and August and skip the months of December and January. We will continue to meet on the 4<sup>th</sup> Monday of the month. Now you get **10** meetings for the same membership rate. Please visit the Web site for more information on upcoming meetings.

Type of membership (September 1 to August 31)

\_\_\_\_\_ Individual - \$25.00

\_\_\_\_\_ Family (includes partner and dependent children living at home) - \$35.00

\_\_\_\_\_ Business/Organization - \$35.00

**MAKE CHECKS PAYABLE TO: Madison Bead Society**

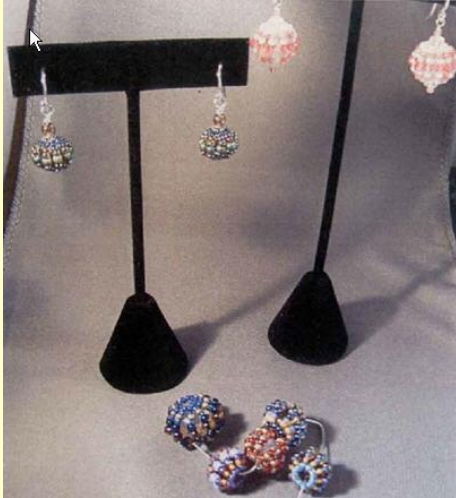
Bring your payment to the next MBS meeting or mail to:

**Madison Bead Society  
PO Box 1563  
Madison, WI 53701-1563**

Membership questions? Call Pat Reichert (608-345-3166) or email [info@madisonbeadsociety.org](mailto:info@madisonbeadsociety.org)

Check the Website often for details of great programs coming up in the new year:

On August 23<sup>rd</sup> at Oakwood village West 6:30-8:30 Gail Piper will be teaching us Spinner beads. Gail tells us: Spinner beads are what I made and used in my entry for our last bead challenge -- it is a very simple 'beaded bead' using fringe technique-- but I would state that people need to have some base line bead weaving experience. I will bring along some larger beads people can use for learning purposes before making their project.



I plan to have kits (very inexpensive) there but will provide a materials list if people want to bring their own supplies. There are some critical bead size issues that can arise if members bring their own supplies, but if they bring exactly what they are told to bring it should work fine.

Everyone should bring:

- \* you favorite beading mat, scissors, etc.
- \* Size 10 or 11 needle and your favorite beading thread

If you want to bring your own beads, you will need:

- \* Size 11 seed beads (Japanese or Czech)
- \* Size 8 seed beads (Japanese or Czech)
- \* Size 8mm round beads (be sure they are 8mm)

September 27<sup>th</sup> at Meant to Bead in Sun Prairie. Meant to Bead will be presenting [Resin Set Pendants](#)

October 25<sup>th</sup> at Oakwood Village West. Bead Bin will be presenting [Viking Knit](#).

November 22 **6-8pm** (NOTE TIME CHANGE) at Hawthorne Branch Library in Madison. Christine Acheson from Beading 4 Success (Topic to Be ANNOUNCED) IF you do not want to change the time Shannon will be glad to host it at Meant to Bead.

December NO MEETING

January NO MEETING

Help Wanted: Show Promotions Chair Trainee

Liz Jones is looking for someone to work with her this year to promote our show in November. This person will take over show promotions in 2011. If you need an incentive, the trainee will get a free table at the 2010 show and next year, as show promotions chair, the trainee will get a free table and free membership. Please contact Liz if you are interested. [ljones11@charter.net](mailto:ljones11@charter.net)

## MBS Officers and Chairs 2010-2011

<b>PRESIDENT</b>	<b>CARLA STEMMER</b>	<b>CARLAEDRN@AOL.COM</b>	<b>608-497-0732</b>
<b>VICE PRESIDENT</b>	<b>GAIL PIPER</b>	<b>GAIL.PIPER@MADISONBEADSOCIETY.ORG</b>	
<b>TREASURER</b>	<b>PAT REICHERT</b>	<b>HOUSEOFPAT@CHARTER.NET</b>	<b>608-345-3166</b>
<b>SECRETARY</b>	<b>NANCY VOLK</b>	<b>UWVOLK@GMAIL.COM</b>	<b>608-233-1909</b>

### PROGRAM COMMITTEE

	<b>SHANNON JAMBARD</b>	<b>BEADYSHANNON@VERIZON.COM</b>	<b>608-837-5900</b>
	<b>SANDY BERNSTEIN</b>	<b>TBERNSTE@WISC.EDU</b>	<b>608-833-701</b>
<b>WEB GODDESS</b>	<b>MICHELLE SKINNER</b>	<b>MICHELLE.SKINNER@MADISONBEADSOCIETY.ORG</b>	
<b>MEMBERSHIP CHAIR</b>	<b>PAT REICHERT</b>	<b>HOUSEOFPAT@CHARTER.NET</b>	<b>608-345-3166</b>
<b>NEWSLETTER EDITOR</b>	<b>PATTY WANNINGER</b>	<b>PATTY.WANNINGER@GMAIL.COM</b>	<b>608-756-0522</b>
<b>SHOW CHAIR</b>	<b>INGRID STARK</b>	<b>INGRIDTHECRAFTY@YAHOO.COM</b>	<b>608-249-8795</b>
<b>SHOW PROMOTIONS</b>	<b>LIZ JONES</b>	<b>LJONES11@CHARTER.NET</b>	<b>608-839-0226</b>
<b>MEMBER AT LARGE</b>	<b>JUDI JACOBS</b>	<b>JUDI.JACOBS@MADISONBEADSOCIETY.ORG</b>	<b>608-825-3467</b>

## I Survived the Interstate Construction Or, What I Found at the Bead & Button Show in June

By Gail Piper

The plethora of orange barrels, reflector strips and Jersey walls on the Interstate between Madison and Lake Mills didn't dim the shine and sparkle of the Bead & Button Show in Milwaukee this June. It was well worth the white knuckle driving and dealing with the construction zones to be there.

If you have never attended the Bead & Button show and you love beads, you really need to put it on your calendar for next year and make the trip. It had been three years since I last visited the Milwaukee-based Bead-A-Holic's Open Bar, and I really wasn't planning to attend it this year. But, personal business was taking me to Racine that Friday evening, so I thought, "What the heck! I'll leave early and on my way to Racine I'll just stop at the B&B Show for several hours and see what kind of mischief I can get into."

Well, I sure did find a lot of things that appealed to me, but I did control myself pretty well that afternoon. There was something new I found that day at the show that I want to share with MBS members: 'cold inclusion' beads by a Michael Harrington.

Cold inclusion beads are smooth, transparent barrel shaped beads the artist creates using cold fusion process. They are filled with various snippets of sequins, bits of lace, ribbon, and pretty little things. As would be expected, each bead takes on the colors, designs and

visual textures of whatever is inside, and the hole is fairly large and can accommodate cord or ribbon. These beads are lightweight as well as colorful and full of designs. They range in price from \$5 to \$20 each. (See his beads at [www.beadsbymichael.com](http://www.beadsbymichael.com).)

Bead & Button June 2010 was Michael Harrington's second bead show ever, the first having been in Kind of Prussia, PA earlier this year. He lives and works in a loft studio in New York City and goes to his family home on weekends (also in NYC). He began this creative process by making designer pens for Neiman Marcus. Those pens are partially covered with his 'cold inclusion' artwork. (See his pens at [www.thanksmikie.com](http://www.thanksmikie.com).) He branched off into making cold infusion beads just two years ago. I would be surprised if they are not such a hit that in time he can't keep up with the demand.

I'm not sure what I am going to create with the small supply of Michael's cold inclusion beads that I purchased, but I promise to bring them to a MBS meeting soon to show to everyone.